



A Lifetime of
Intricate Care
in one Life Science
Digital Ecosystem



DISCOVER BIOLIFE

A bridge between global
medical resources and good
health.



Contents

Executive Summary	02
What We Do	04
How It Works	05
Products and Services	16
EHRaaS	16
Digital Portals and Bioscience R&D	17
Health Data Collecting and the BioLife Platform	18
Why Choose BioLife	20
BioLife Tokenomics	22
BioLife Token (BIOT) Exchange	24
Allocation of Raised Funds	26
The BioLife Digital Ecosystem	28
BioLife Technology	30
BioLife Service Platforms	32



Executive Summary

The value of global bioscience resources is immeasurable. Records of personal health data across the world are in chaos. Patients with multiple access points to local medical services may visit all of them yet cannot retrieve their patient histories. Often electronic medical data is lost or leaked.

Medical tourism is on the rise as patients travel to distant destinations to receive superior therapies and treatments and to gain access to specialized biomedical devices. This incurs considerable time, money, and communications costs. Continuity in follow-up visits is often absent.

Biomedical health services have a high demand for accurate personal health data for their targeted therapies and precise treatments. This is because these services and their related biotechnologies are based on biosciences such as molecular biology, molecular genetics, genomics, metabolomics, proteomics and systems biology.

Advances made in Bioscience resources across the globe are disparate. There is little equity in the sharing of new treatments and therapies cross border.

BioLife will complete the integration of the world's foremost life science resources, providing digitization for a diversity of valuable resources and health data in a dynamic and secure digital ecosystem.

Employing distributed ledger technology (DLT), BioLife offers a traceable, secure, convenient, and confidential channel for activity within the bioscience resources community worldwide.

BioLife will increase the visible value of bioscience resources worldwide. The world's best biomedical resources, treatments, therapies, products and services are digitized and offered to patients in a secure, confidential and convenient platform.

BioLife sets up a credit ledger for every owner of biomedical resources and builds a private health ledger for every patient. Data is exchanged peer-to-peer without any intermediate parties.

The 82 products and services of Swiss Serolab® will become the first assets on the BioLife mall. BioLife's on-chain channel supports owners of medical resources, R&D labs, equipment suppliers, and pharmaceutical companies in a dynamic and active digital supply chain.

Serving patients requiring specialized treatments, BioLife supports high net worth individuals in retaining their own electronic health records and accessing treatments.

BioLife is integrating the world's major life science resources within a digital ecosystem that underpins lifetime patient care and ensures global liquidity for high end services.

Countering the numerous issues associated with patient data leakage, distributed ledger technology (DLT) has emerged at the forefront of data tracking, sharing and protection of patient privacy. BioLife is built on the consortium group based on AACChain bottom layer technology.

Life science health pharmaceutical and service providers along with patients are invited to contribute to the digitising of assets on BioLife and the creation of dynamic electronic health records (EHR) and credit ledgers.

BioLife digitizes assets and handles private records for patients, investors and owners of global biomedical resources.

A consortium chain of ACChain, BioLife's on-chain channel supports global bioscience asset owners in a dynamic digital supply chain. Patients can create a personal Electronic Health Record and access high-end product and service suppliers.

The BioLife digital ecosystem integrates the world's major life science resources to underpin lifetime patient care and ensure global liquidity for the bioscience industry.

Digitised biomedical assets and services

Permission-based Electronic Health Records

Redemption and trading of digital assets



WHAT WE DO

01: _____

Distribution (Credit Books)

Supports creation of a digital BioLife passport containing secure records of life science assets and information.

02: _____

Circulation (BioLife Mall & BIOT)

Maintains traceability throughout the supply chain and trade in digital assets between resource owners and patients.

03: _____

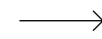
Service (Placement)

Immutable peer-to-peer BIOT exchange occurs on the BioLife chain when linked smart contracts are triggered.



HOW IT WORKS

Medical Centre



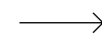
Medical Agent



Medical Equipment Producer



Patient





HOW IT WORKS

01: _____
Credit Ledgers

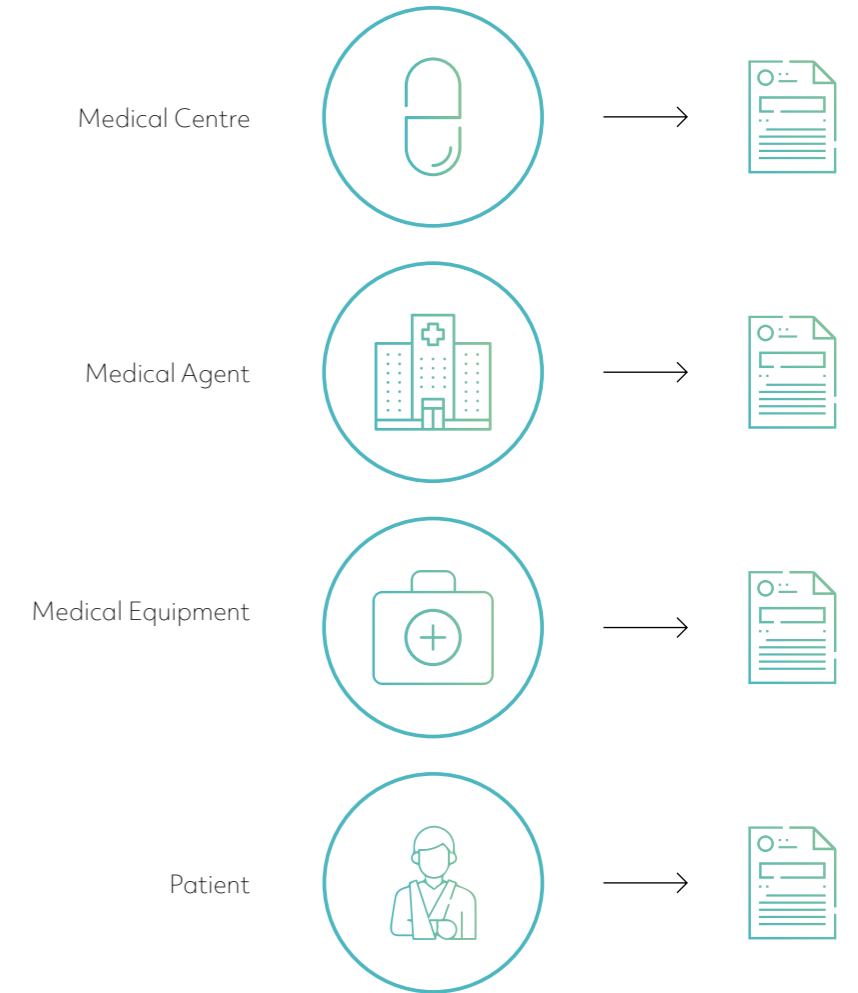
Biomedical treatment centres, health agents and equipment suppliers enter token data and real-time data of assets to build secure, immutable, tamper-proof Credit Ledgers on the BioLife chain.

These assets become available in the BioLife Mall through triggered smart contracts. A private, personal electronic health record (EHR) is created for patients as various biomedical health resources are accessed.

Containing a patient's ongoing health status information, this Health Ledger is shareable with selected providers peer-to-peer only after private keys are triggered.

HOW IT WORKS

01: _____
Credit Ledgers





HOW IT WORKS

02: _____

Assets Circulation

Biomedical assets and services made digital on the BioLife chain are circulated through the BioLife Service Platform. Smart contracts provide owners of bioscience resources with digital rights.

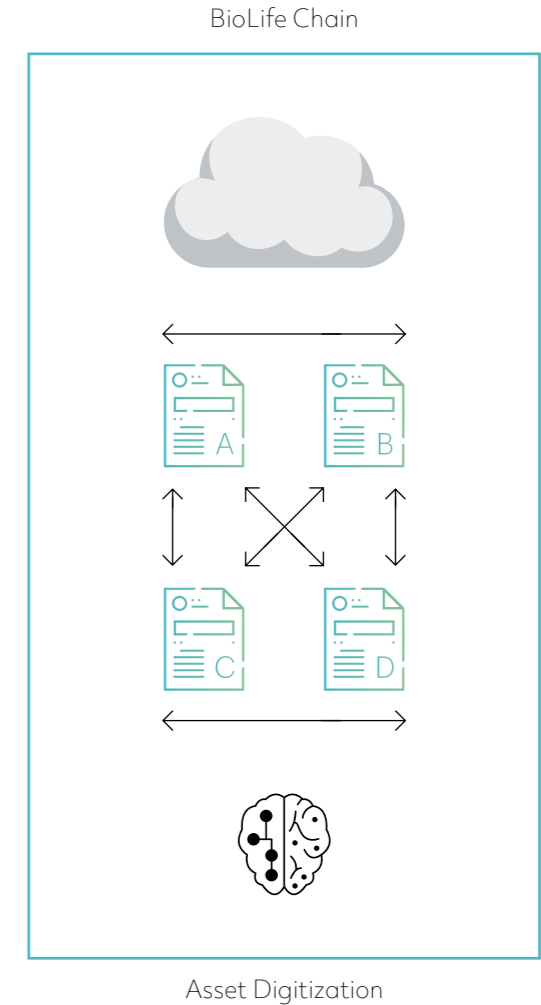
Circulation occurs in a blockchain service channel which is traceable, secure, convenient and confidential. Complete coverage for bioscience health care resources is provided and people everywhere can access meaningful health services.

Part of ACChain's global circulation ecosystem, assets circulate through a decentralised trading system. By investing in BIOT, the internal fuel token of BioLife, participants can receive corresponding investment return.

HOW IT WORKS

02: _____

Assets Circulation





HOW IT WORKS

03:

 Service Platform

The BioLife Service Platform uses blockchain technology to record the entire process of the biomedical services supply chain, treatment processes and results.

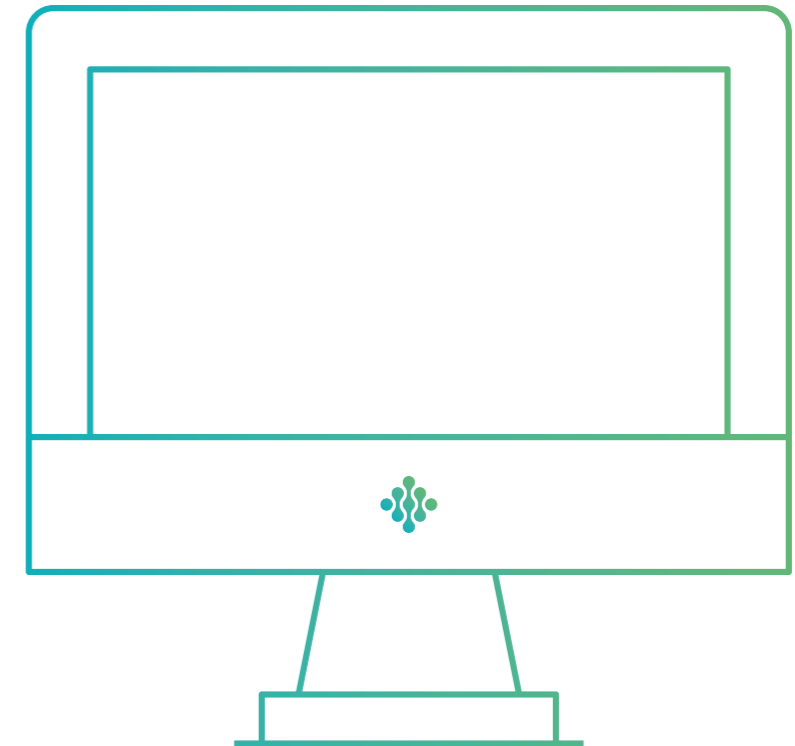
Top health services resources and the newest R&D achievements from all geographies as well as rare, high-end biomedical resources will be accessible at all times.

Digital assets held by inhabitants of the BioLife digital ecosystem can be liquidated through a global secondary market and withdrawn through supernodes by way of legal tender or other digital assets.

HOW IT WORKS

03:

 Service Platform





HOW IT WORKS

04: _____

Community Members

Three member types occupy the BioLife community: clients (patients and their families), providers (health services practitioners, biomedical researchers, health service institutions, government agencies and nonprofits), and developers (programmers and software engineers).

Serolab® of Leukerbad Wellness Management Group Ltd, the company that created precise treatments and customised therapies for 33 common chronic illnesses and has over 1,000 bioscience patents covering anti-ageing to major illness precaution.

The first resource party to join BioLife, Serolab® will digitise 80 types of biomedical resource that will be available at launch.



HOW IT WORKS

04: _____

Community Members



Clients



Providers



Developers



HOW IT WORKS

05: _____

Global Data

BioLife's adoption of Distributed Ledger Technology (DLT) as its technology backbone will introduce many benefits to all areas of the life science health services industry that are impacted by global bioscience data.

These include heightened security, resistance to tampering, the protection of personal identity information and other elements of privacy, including protection against data scrapes.

BioLife will establish a shared data platform among researchers and record biomedical scientific research results to ensure clarity of ownership, reduce R&D duplication and encourage fruitful results.

HOW IT WORKS

05: _____

Global Data





Products and Services

On the BioLife Service Platform, patients can obtain authenticated pharmaceutical drugs and biomedical services and receive access to a credit ledger from asset owners. Providers include pharmaceutical companies, health service organizations, equipment manufacturers and research institutions. BIOT, the internal fuel token for BioLife aims to promote the sustainable development and lifelong progress of bioscience R&D. When patients purchase health services on the BioLife Service Platform, their health data is accessed only through private key and transmitted peer-to-peer, ensuring personal privacy and security.

EHRaaS

In Version 1.0 of its platform, BioLife will create an electronic health record as a service ("EHRaaS"). Underpinning these will be the smart contracts that set rules for exchange of value via trustless execution.

EHRaaS will use machine learning AI to identify personal needs, recommend or deploy bioscience technologies, and establish connections with health care institutions.

BioLife EHRaaS uses blockchain technology. There will be no personal identity information scraping ("PII") and no reselling of personal data by BioLife or any third party.

Digital Portals

Blockchain technology will form the backbone and record the entire process of the biomedical supply chain, treatment processes and results, with the BioLife Service Platform providing digital portals to the community.

"BioLife's adoption of DLT as its technology backbone streamlines the biomedical sector impacted by big data."

- Heightened security and resistance to tampering
- Protection of personal, identifiable information and privacy elements
- Elimination of any single point of failure
- Reduced transaction times
- Elimination of third party transaction fees

Bioscience R&D

BioLife will also provide a large amount of sample data for scientific research institutions, establishing a shared data platform for life science researchers worldwide to reduce R&D duplication. Five specific use cases for the BioLife Service Platform are detailed in the BioLife White Paper.



Health Data Collecting





BioLife is Globalizing Bioscience Health Care

BioLife tokens (BIOT) provide contributors with access to the best available biomedical resources and life science health care all around the world. This new on-chain system powered by distributed ledger technology opens a transparent marketplace for a wealth of customized bioscience treatments and therapies.

We are creating BioLife tokens to solve issues faced in life science health care today, like private health data security, physical asset and research data transparency, cross-border payments and payment risk. BioLife is making it possible for remarkable bioscience R&D to develop within a single digital ecosystem.

Why Choose BioLife?

BioLife tokens give biomedical resource owners, patients, and investors the ability to acquire, maintain or access valuable bioscience technologies, resources and health care.

Among the first resource providers to join BioLife is **Swiss Serolab[®] of Leukerbad Wellness Management Group Ltd**, is among the first resource providers to join BioLife, with provision of over 80 types of medicines. The company owns more than 1,000 bioscience patents covering areas from anti-ageing to major illness precaution. **Enshi Tinjoy Bio-Technology Co., Ltd**, another Resource Provider on the BioLife chain, is a high-tech enterprise specializing in micro-ecological health. **Shenzhen Dongchen Pharmaceutical Holdings Ltd**, whose main business includes pharmaceutical precision retail, big data applications, health management, and cross-border ecommerce of big health will integrate the chain pharmacy resources and adopt a model of “direct mining and self-operating + offline experience + health consultants” to provide clients with a number of value-added services. **Guangzhou Zhongxin Gene Medical Technology Co., Ltd.**, a genetic wholly-owned enterprise with a mission to “take genetic technology as the core, with mobile intelligent monitoring of the IoT platform to support and implement dynamid monitoring” is also among the first resource providers to join BioLife, with benefits to patients and the industry itself.

2016 GLOBAL LIFE SCIENCES OUTLOOK, DELOITTE

The size of the global digital health market was \$60.8 billion USD in 2013 and is expected to increase to \$233.3 billion USD in 2020.





The BioLife Token (BIOT)

Swiss Vitality Cells Laboratory Limited will be the operations company for the Token Generating Event.

- as an adopted exchange medium in the global bioscience and medical tourism marketplace
- as a governance tool
- as a reward for proposing and/or implementing new improvements to the platform
- in the creation of a protocol layer for third-party applications
- as a reward for valuable knowledge sharing
- as a means of monetization for third-party vendors
- as an access API to the BioLife platform
- as a reward for securing the platform

This will increase liquidity of the whole BioLife ecosystem and steepen the velocity of BIOT as its native and exclusive currency. This may result in higher appreciation of BIOT as adoption expands and the platform becomes popular.

Token Generation Event

The Token Generating Event will be operated by a separate company called **Swiss Vitality Cells Laboratory Limited**.

The BioLife Token Generating Event will take place between 28 Nov - 04 Dec 2018 and will last until tokens are sold. BioLife may stop or extend the sale at any time without advanced notice.

How to Purchase BioLife Tokens

Contributors can buy BIOT with Ether (ETH), Bitcoin (BTC) or US Dollars (USD).

Lockup Period and BIOT Incentives

There will be a lockup period of 45 days for the company reserve, early TGE, team pool, and early buyers. Principals and owners will not be permitted to execute trades of any tokens during this period.

After the 45-day lockup period concludes, everyone who purchased BIOT during the presale or the TGE will be given a 10% bonus for every BioLife Token held in cold storage and out of circulation for a period of 180 days.



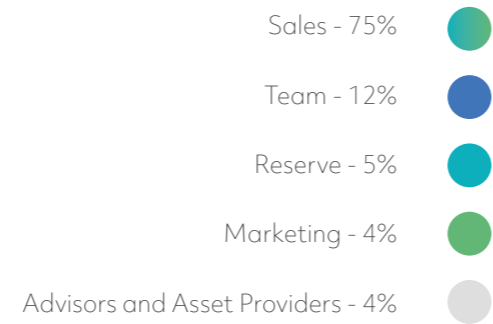
BioLife Token (BIOT EXCHANGE)



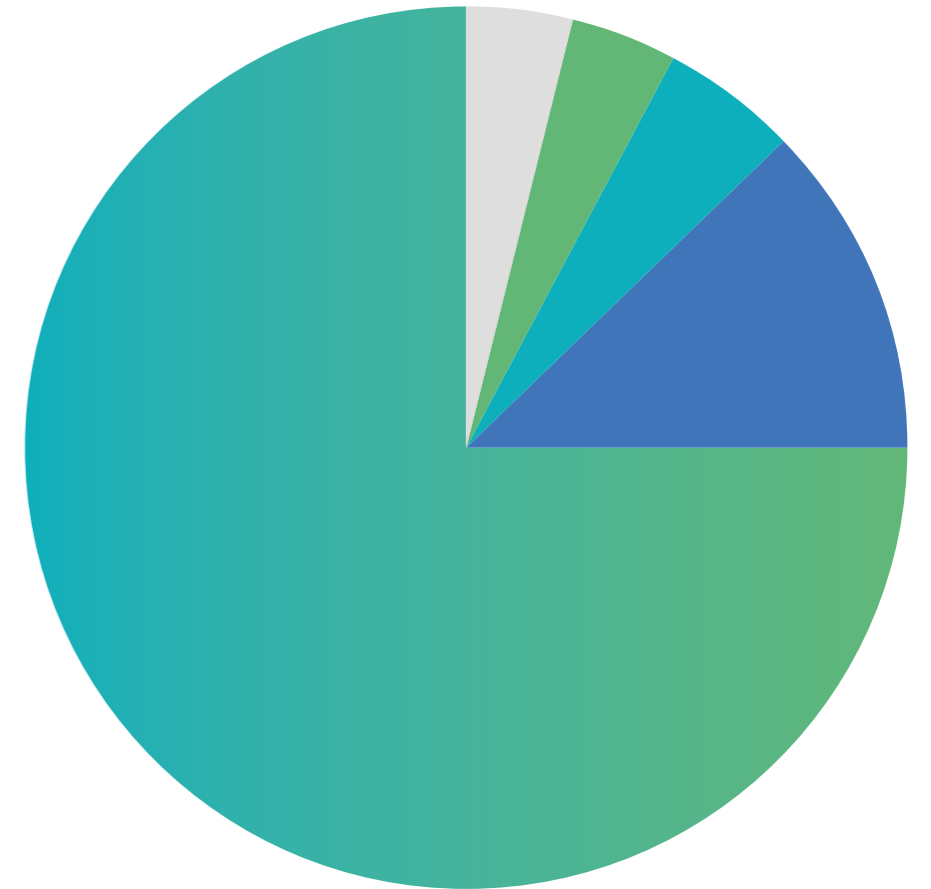


Allocation of Raised Funds

Funds raised from the token sale will be allocated as follows: Raises will make use of brokers. Fees are 30% in round 1, 20% in round 2, and 10% in round 3. Cash raised will be used to build the BioLife ecosystem and provide cash advance against the fund, retrieving tokens in lieu when these are ready for release.

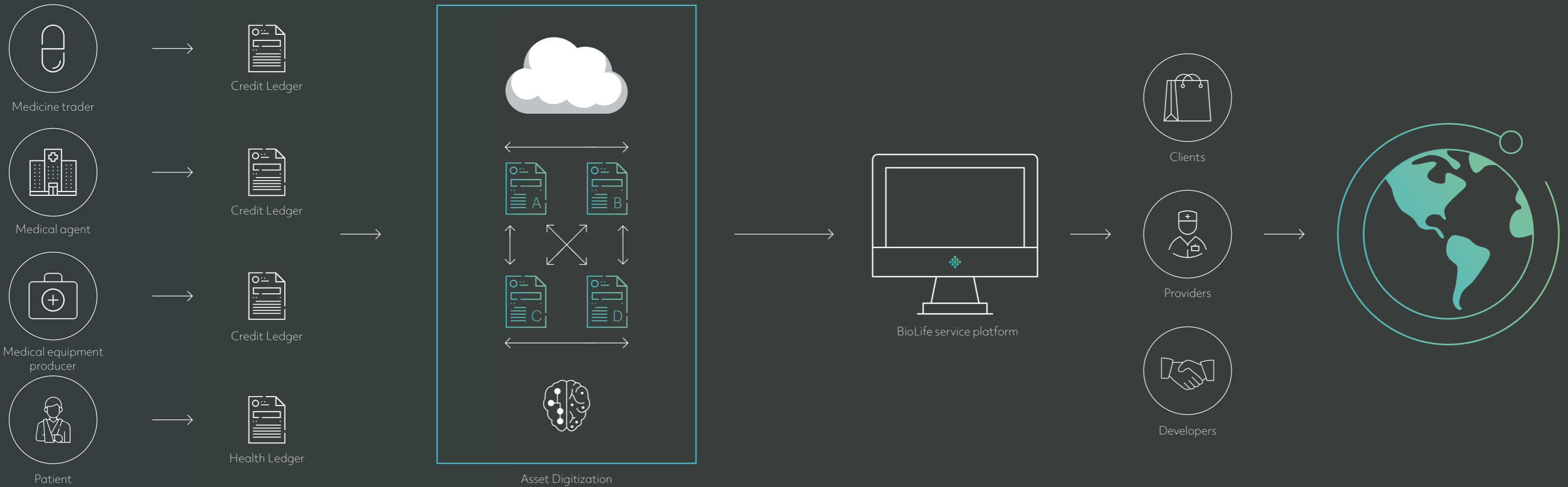


Split Issuance





BioLife Digital Ecosystem





On-chain Distribution, Circulation and Service for the Biosciences

BioLife is built on the consortium chain group based on ACChain bottom layer technology. Life science health pharmaceutical and service providers along with patients are invited to contribute to the digitizing of assets on BioLife and the creation of dynamic electronic health records (EHR) and credit ledgers.

BioLife offers a service channel of traceability, security, convenience and confidentiality.

The BioLife Service Platform records a patient's EHR in an on-chain private ledger and patients may choose to share this peer-to-peer with top biomedical facilities. Interactions contribute to forming a trust index of biomedical resource providers and a health index for the patient. Rare, high-end health care resources become continually accessible, including offline services.

Once assets are placed on the ACChain network through BioLife, these digital assets can be globally circulated, liquidated through a global secondary market, and withdrawn through supernodes in the way of legal tender or other digital assets.

TECHNOLOGY

Bioscience develops biological solutions to sustain, restore and improve quality of life for humans, plants and animals in our world.

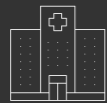




BioLife Service Platform

ASSET CIRCULATION ECOLOGY

Ecologic chain layer



Application chain layer



OBTAIN



SMART CONTRACT



Cross ecological permission

USER ID



Patient



Medical



Institution

Encryption data chain layer



TOKEN DATA



BioLife chain

TRANSACTION DATA



ENCRYPTION



DISCOVER **BIOLIFE**

Connecting you with high-end bioscience health care based on 60 years of real solutions.





For more information on the BioLife project visit:

www.biolifechain.io

or email

hello@biolifechain.io

You can also find us on:



[@biolifechain](https://www.instagram.com/biolifechain)

